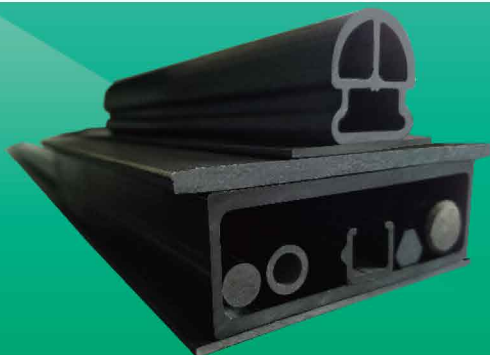


Carbon Fiber Pultruded Composite Material

碳纤维拉挤复合材料



主要特点

Main Features

- 密度小、质量轻: 密度仅为钢材的1/5。
Low density, light weight: the density is only 1/5 of steel.
- 强度、弹性模量高, 抗拉强度比钢材大4-5倍, 弹性回复为100%。
High strength and elastic modulus: tensile strength is 4-5 times higher than steel, and elasticity can recover to 100%.
- 耐腐蚀性能优异, 长期蠕变小。
Excellent corrosion resistance and low long-term creep.
- 抗疲劳性能优异。
Excellent fatigue resistance.

主要应用

Main Application

风力发电叶片
Wind turbine blade



土木工程加固
Civil engineering reinforcement



LED生产线搁架
LED production line stock rack



医疗器械
Medical equipment

